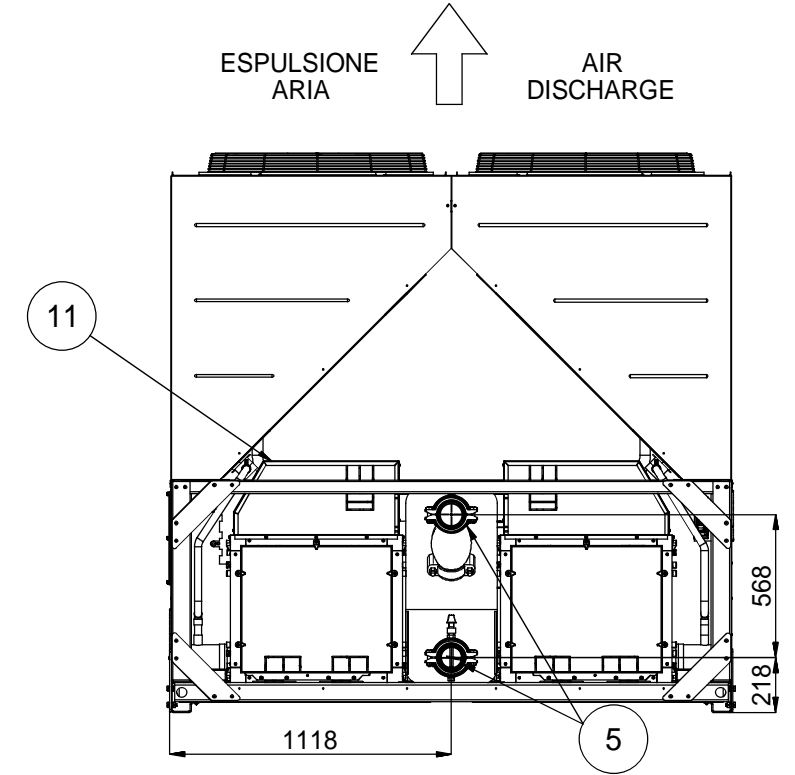
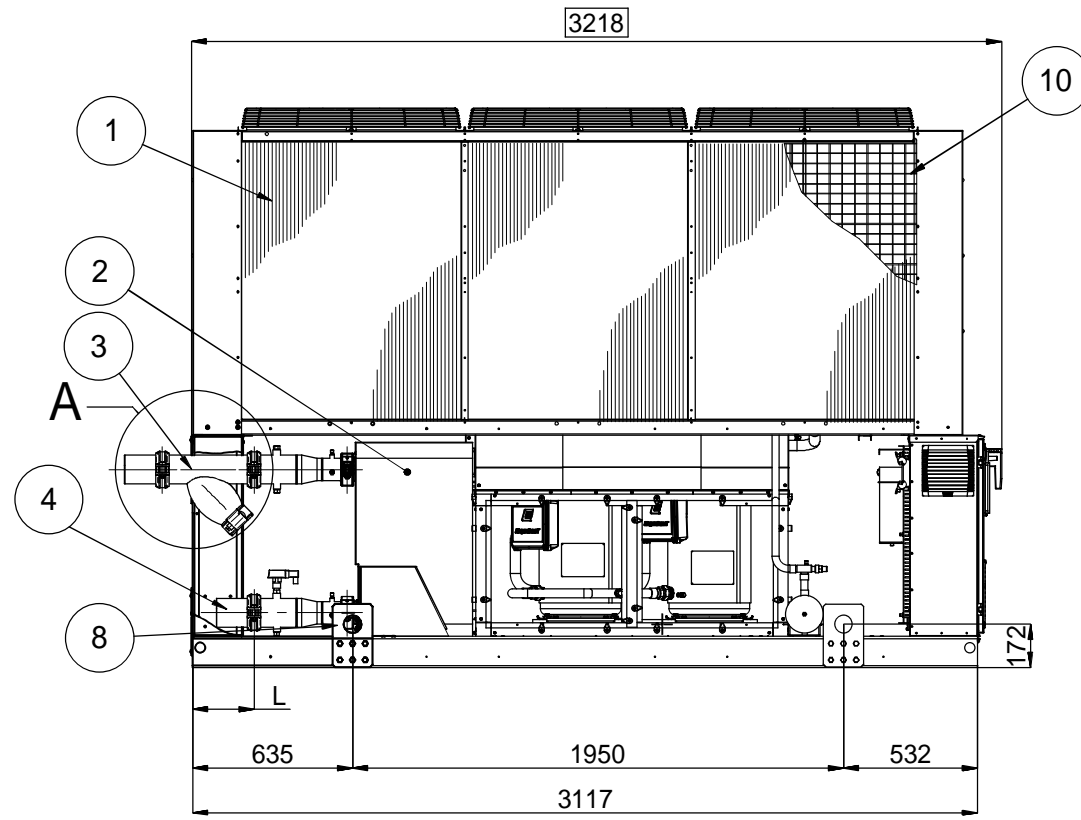
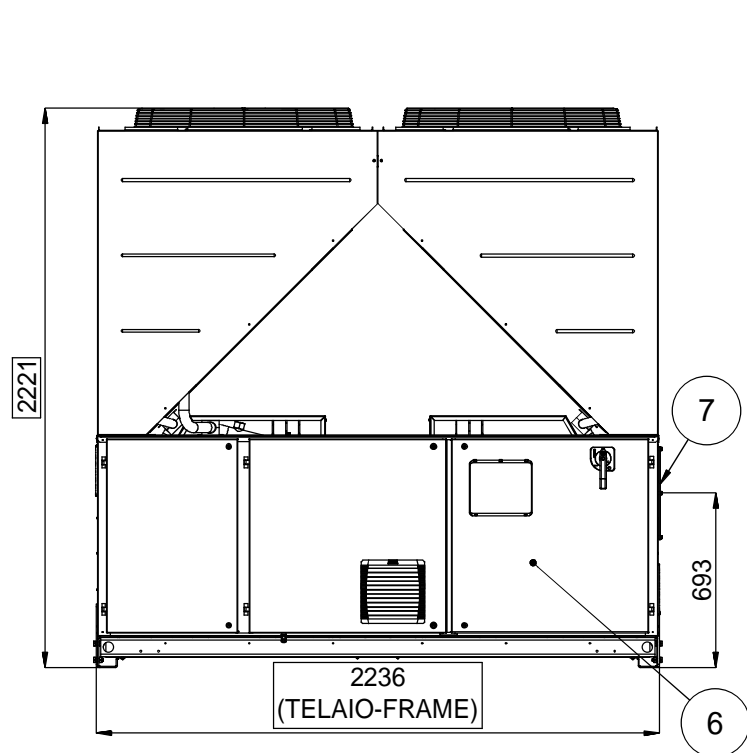
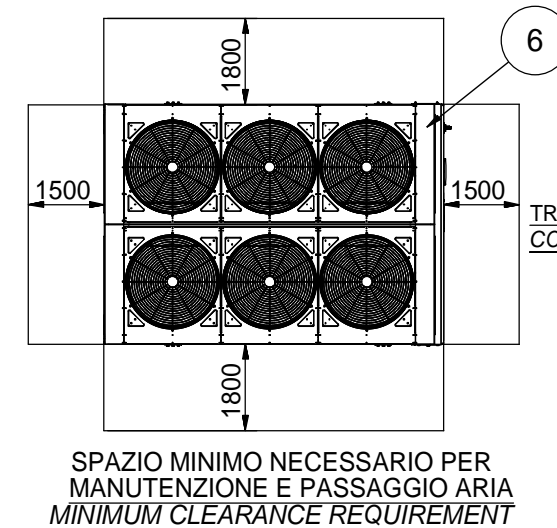
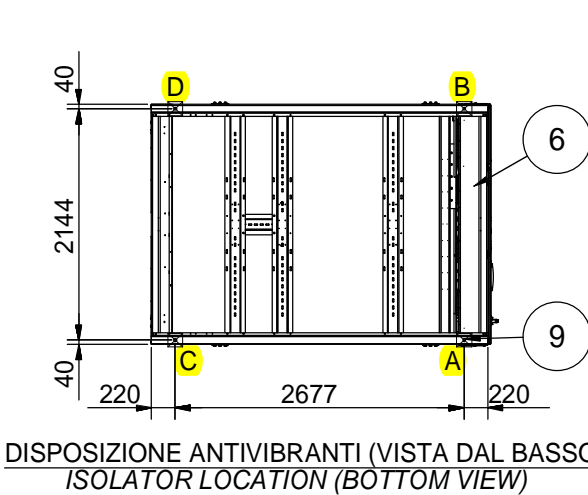


| Revision Table | | | | |
|----------------|------------|-------------------------|----------|----------|
| Rev. | Date | Description | Drafter | Approved |
| A | 08/02/2016 | NUOVE CONNESSIONI ACQUA | F.Giorgi | P.Ciolfi |

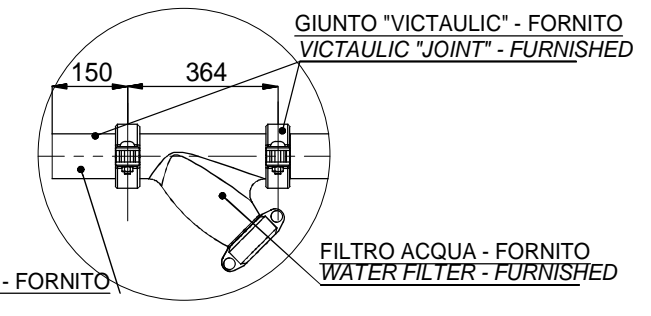


LEGENDA - LEGEND

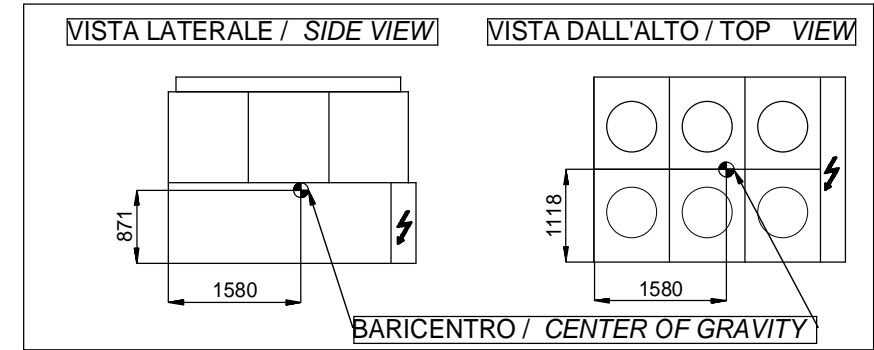
- BATTERIA CONDENSANTE
CONDENSER COIL
- EVAPORATORE
EVAPORATOR
- ENTRATA ACQUA EVAPORATORE
EVAPORATOR WATER INLET
- USCITA ACQUA EVAPORATORE
EVAPORATOR WATER OUTLET
- CONNESSIONI EVAPORATORE VICTAULIC PER TUBO Ø114.3
VICTAULIC EVAPORATOR CONNECTIONS Ø114.3 O.D. PIPE
- PANNELLO DI COMANDO E CONTROLLO
OPERATING AND CONTROL PANEL
- ASOLA 320x170 INGRESSO ALIMENTAZIONE PANNELLO COMANDO E CONTROLLO
320x170 SLOT FOR POWER AND CONTROL PANEL CONNECTION
- PIASTRE PER SOLLEVAMENTO UNITA'
RAISING PLATE
- FORI Ø25 mm PER MONTAGGIO ANTIVIBRANTI
ISOLATOR MOUNTING HOLES Ø25 mm
- GRIGLIE PROTEZIONE BATTERIE (OPTIONAL)
COIL PROTECTION GUARDS (OPTIONAL)
- CABINA INSONORIZZANTE COMPRESSORE (OPTIONAL)
COMPRESSOR SOUND ENCLOSURE (OPTIONAL)



**DETTAGLIO A
DETAIL A**



TRONCHETTO DI COLLEGAMENTO - FORNITO
CONNECTING PIPE - FURNISHED



| UNITA' / UNIT | L | VERSIONE VERSION | TIPO CONDENSATORE CONDENSER TYPE | PESO / WEIGHT KG | | CARICHI ANTIVIBRANTI KG ISOLATOR LOADS KG | | | |
|----------------|-----|--|---|------------------------------|----------------------------|--|-----|-----|-----|
| | | | | SPEDIZIONE SHIPPING | FUNZIONAMENTO OPERATING | A | B | C | D |
| EWAQ310F-XR | 244 | EWAQ320F-XS EWAQ360F-XS | ALLUMINIO / ALUMINUM ACRYLIC COATED | 2500 | 2540 | 643 | 643 | 627 | 627 |
| EWAQ320F-XS-XL | 244 | EWAQ310F-XR EWAQ320F-XL EWAQ340F-XR EWAQ360F-XL | ALLUMINIO / ALUMINUM ACRYLIC COATED | 2640 | 2680 | 678 | 678 | 662 | 662 |
| EWAQ340F-XR | 192 | | ANTIVIBRANTI IN GOMMA RUBBER ISOLATORS | MODELLO (Q.tà) / TYPE (Q.ty) | | 91226 (4Pz.) | | | |
| EWAQ360F-XL | 192 | | ANTIVIBRANTI A MOLLA SPRING ISOLATORS | MODELLO (Q.tà) / TYPE (Q.ty) | | 91233 (4Pz.) | | | |
| EWAQ360F-XS | 192 | | | | | | | | |